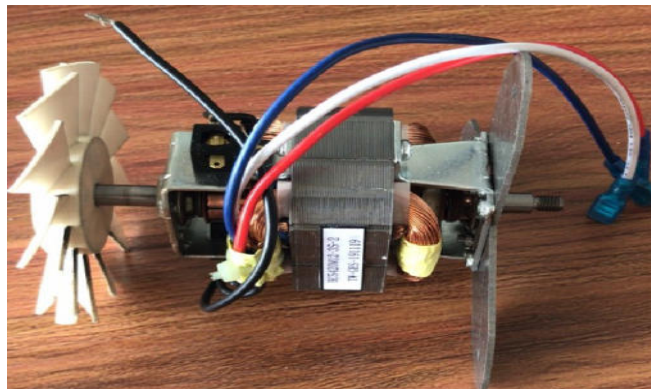


TEAMWORK GLOBAL GROUP LTD

电机确认书 MOTOR APPROVAL SHEET



客户物料编号: 191122-002
CUSTOMER CODE NO :

产品名称: MACHINE NAME:	MIXER	产品型号: MACHINE TYPE:	Universal motor		
电机型号: MOTOR TYPE:	UM5420M127-3S (铜包铝)	电压/频率: VOLT/FREQ:	127V/AC 60Hz		
版本: VERSION:	A/0	日期: DATE:	2019.11.22.		
制表: DESIGNED BY:	WANG	审核: CHECKED BY:	LONG	批准: APPROVED RY:	LEE

客户确认签名: CUSTOMER APPROVED SIGNATURES

此为正式生产确认数据, 我方将严格按照此技术数据批量生产。

This is formal technical data, all mass order production will be followed exactly according to this approved technical file

TEAMWORK GLOBAL GROUP LTD

电机性能测试报告 Performance test report

第2页

电机型号 Motor Model:		UM5420M127-3S (铜包铝)		额定电压 / 频率 rated Voltage/Frequency		127VAC 60Hz		项目编号 Item No.		MGES-191122-002			
序号	检测项目 Item			标准 Standard	测试结果 Results								
					1	2	3	4	5				
1	电气特性 Electric characteristics	空载 Free load	电流 Current	(H) 1.65±15%(A)	1.68	1.67	1.68	1.64	1.68				
2				(M) 1.60±15%(A)	1.62	1.60	1.65	1.62	1.64				
3				(L) 1.58±15%(A)	1.58	1.58	1.58	1.58	1.58				
4			功率Power	(H) 205±15%(W)	205	208	202	205	206				
5				(M) 195±15%(W)	192	192	192	192	192				
6				(L) 190±15%(W)	189	186	188	185	184				
7			转速Speed	(H) 19500±15%(rpm)	19500	19800	19650	19860	19820				
8				(M) 19000±15%(rpm)	19200	19100	19000	19100	19200				
9				(L) 18500±15%(rpm)	18600	18500	18450	18400	18500				
10		火花Spark	≤1.5 (class)	√	√	√	√	√					
11		负载 On load	负载风叶Fan onload	37.5x100(A6)	√	√	√	√	√				
12			电流 Current	2.68±10%(A)	2.65	2.65	2.64	2.68	2.64				
13			功率Power	350±10%(W)	356	361	350	352	354				
14			转速Speed	12500±10%(rpm)	12700	12600	12600	12700	12600				
15			火花Spark	≤2 (class)	√	√	√	√	√				
16	机械特性 Machine characteristics	转向 Rotation	CCW	√	√	√	√	√					
17		轴伸 Extension	8±0.5	8.2	8	8.2	8.1	8.1					
18		虚位 End play	≤0.3mm	√	√	√	√	√					
19		噪音 Noise	≤80(dB-1000mm)	√	√	√	√	√					
20		振动 Vibration	≤15(mm/s)	√	√	√	√	√					
21	安全性 Safe	高压测试 Hi-pot test	1800VAC / 2mA / 1SEC	√	√	√	√	√					
22		绝缘电阻 Insulation resistance	冷态Cold Conditions ≥50 (MΩ) 热态Hot Conditions ≥5 (MΩ)	√	√	√	√	√					
23		绝缘等级 Insulation Class	F	√	√	√	√	√					

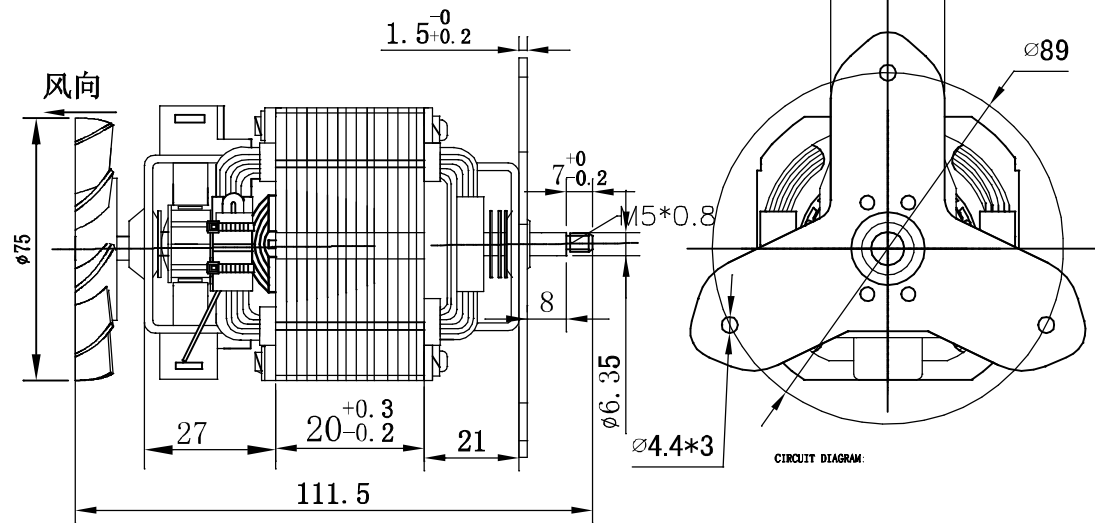
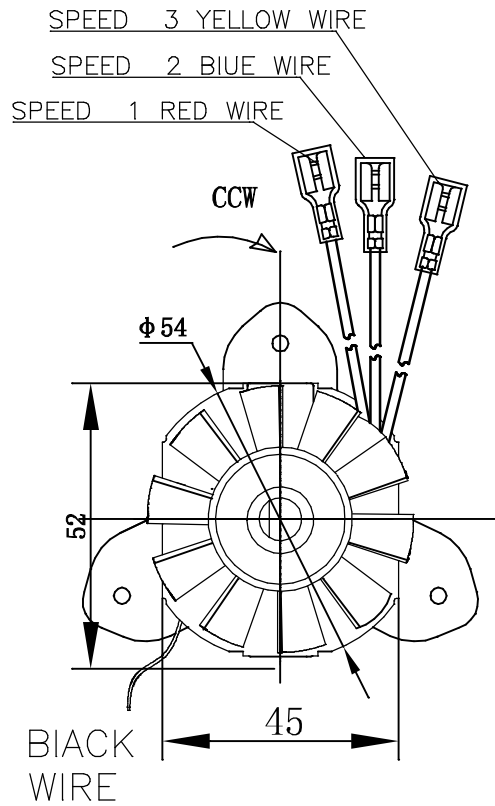
for and on behalf of
TEAMWORK GLOBAL GROUP LIMITED
 天沃環球集團有限公司

 Authorized Signature(s)

制表 DESIGNED BY : WANG

审核 CHECKED BY: LONG

批准 APPROVED BY: LEE



MOTOR SPECIFICATION (AT NO LOAD)

1. VOLTAGE; AC127V/60Hz

Current :SPEED 1 1.65±15% A

SPEED 2 1.62±15% A

SPEED 3 1.58±15% A

POWE SPEED 1 205±15% W

SPEED 2 195±15% W

SPEED 3 190±15% W

RPM SPEED 1 19500±15% RPM

SPEED 2 19000±15% RPM

SPEED 3 18500±15% RPM

				TEAMWORK GLOBAL GROUP LTD		Name 名称:		UM5420M127-3S	
						Product Name 型号:		5420M127	
						Specification 规格:		127V/60Hz	
Rev. 标记				Description 更改内容		Issued By 签字		Date 日期	
Designed By 设计				Approved By 批准		Tolerances (Do Not Scale Drawing)		Drawing No. 图号:	
Checked By 审核				Date 日期		X ±0.2 X.X ±0.1 X.XX ±0.05		Part No. 零件编号:	
						Unit: 单位		Material: 材料:	
						mm 毫米		KP54200001	